



*Bringing  
Artists  
Together  
with the  
Community*

Cathedral Station, Box 527  
New York, NY 10025-0527  
T: 212.316.6024  
E: [wsacnyc@gmail.com](mailto:wsacnyc@gmail.com)  
W: [www.wsacny.org](http://www.wsacny.org)

Newsletter published monthly Sept-June

**Broadway Mall  
Community Center**  
96th Street & Broadway (center isle)  
Hours: Wed 6 - 8 pm  
Sat & Sun 12 - 6 pm

#### BOARD OF DIRECTORS

**PRESIDENT** Anne Rudder (Acting)  
**VICE PRESIDENT** Margo Mead (Acting)  
**TREASURER** Anne Rudder  
**SECRETARY** Daniel Boyer (Acting)  
**MEMBERSHIP** Linda Lessner  
**MEMBER AT LARGE** Carole Barlowe, Silvia Boyer, Sonda Weiner  
**FINE ARTS** Margo Mead  
**PHOTOGRAPHY** Jean Prytyskacz  
**MUSIC** Judith Davidoff  
**POETRY** Carolyn Reus

#### NEWSLETTER CONTRIBUTORS

**EDITOR** Mee Hyun Gerstein  
**PROOFREADER** Linda Lessner  
**PHOTOGRAPHERS** Herb Fogelson, Carolyn Reus, Jan Wetzel, Jean Prytyskacz  
**WRITERS** Carole Barlowe, Nicholas Birns, Anne Rudder, Marianne V. McNamara, Deborah Yaffe

#### WEBSITE

**WEBMASTER** Robyn Gecht

**ARE YOU MOVING?** Please advise us immediately of any changes in address, phone number, etc. Send this information via mail to the attention of "Membership Chair" or via email to [wsacnyc@gmail.com](mailto:wsacnyc@gmail.com).

## Salon Show 2013 June 19 - July 14, 2013

Curated by Margo Mead  
By Marianne V. McNamara  
Photos © Herb Fogelson



Huzzahs to Linda Lessner and Margo Mead, curators of the *Salon Show 2013* at the 96 St. Gallery. It's a tricky business to take 25 artists working in various styles and media and create a show of marvelous cohesion and interest. So, curators take a bow.

Now, on to the artists who did the work which makes this show lively, provocative and exceedingly professional.

*(Continued on Page 2)*

### Free Promotional Opportunity for WSAC Members!

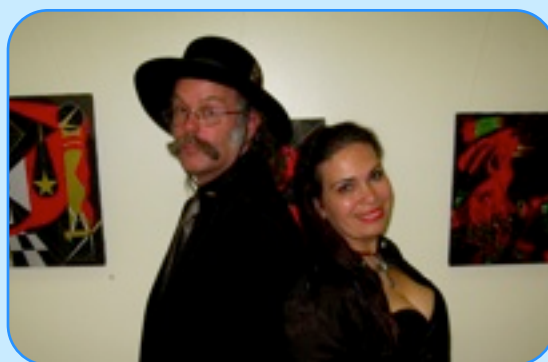
The new WSAC Website features a more user-friendly layout and an Artists' Gallery, where WSAC Members can showcase up to 4 images of their work. All pages will have the same design, so you can visit the pages currently up for an idea of what your own Artist Gallery page will look like!

This is an exclusive offer to WSAC Members, so if your membership is up-to-date and you would like to take advantage of this opportunity, please visit the Artists' Gallery Page of the new WSAC Website (<http://www.wsacny.org/artists-gallery.html>) for the Artists' Gallery Guidelines and Submission Information.

September 11-22, 2013

## Dual Show: Ex Superrealismus ad Mystica Daniel C. Boyer & Silvia Soares Boyer

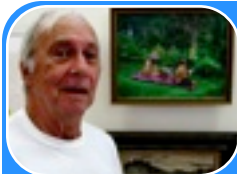
By Deborah Yaffe  
Photos © Herb Fogelson



Reception Photo © Deborah Yaffe

*(Continued on Page 3)*

**Salon Show 2013**



Robert Eckel



Daniel Boyer



Carole Barlowe



Dammika D. Ranasinghe



Clare Stokolosa



Ida Marx



George Jellinek



Herb Fogelson



Linda Lessner



Sondra Weiner



Nate Ladson



Monica Serres



Amy Rosenfeld

**Ida Marx** leads off the show with two cityscape oils in the noir style. A loneliness permeates each scene in *Deep Night* and *Desolation*. We sense there are people behind some of the windows of the buildings but they remain anonymous and as mysterious as the night itself. Next we are flooded with light and color in a splendidly executed watercolor, *Tulips and Roses, Botanical Gardens*, by **Clare Stokolosa**. With a palette of vivid reds, yellows and greens splashed on the paper, the flowers are bursting with the life and joy that comes with Spring.

**Dammika D. Ranasinghe** brings two acrylic works on canvas paper, the first being *Spring Arrived*. Here, the artist creates interesting black line patterns among lush greens and reds in an almost abstract landscape. Aptly titled *Friendly Chat*, the second painting is an amusing rendition of two busy birds seemingly deep in conversation. The somewhat dark palette of deep reds, purples and greens gives the painting another intriguing dimension.

Long time WSAC member **Carole Barlowe** continues to pique our interest with her unusual collages as well as her work in other media. *She's Dreaming*, a watercolor-charcoal collage, is a vivid portrait of a confident and fashionable woman of today. The soft, grey and muted landscape, *Shadowscape*, shows this artist's great versatility with watercolor and ink.

Working in the medium of gouache, **Daniel Boyer** creates a kaleidoscope of swirling color, line, text and images in *The Prom (after Matt Groening)*. This large abstract is a feast for the eye for the viewer who will discover many tiny scenarios in the painting, especially the rampant folks whirling around the canvas, seemingly hanging on for dear life!

And now for another aspect of life...*Harlem Hill -Sunday*, a sunny, lush acrylic by **Robert Eckel**. In an idyllic park a man and woman relax on a blanket reading the Sunday paper, taking a break from the city's cacophony. Through the painting we can feel the soft summer air, smell the ground and the trees, and enjoy this peaceful moment in time with this city couple.

**George Jellinek** captivates the viewer with the lovely, lyrical watercolor *Tulips*. Variegated tulips fairly jump off the paper, they're so vibrant with life. Jellinek adds to the drama by leaving a significant border of white space around these beautiful harbingers of Spring.

The digital photographs of **Herb Fogelson** have long been treasured by the members and visitors of the WSAC shows at the Mall. *Fixer Upper*, a haunting view of a house down on its luck surrounded by a lovely field of grass and flowers, is an homage to abandoned properties everywhere. Who were the folks the house once protected? *Sunset, Ulster County* is a dramatic skyscape. Skeletal trees form eerie patterns against the encroaching red and blue of an early evening sky.

**Linda Lessner**, also no stranger to visitors to the Mall, brings us a large sunlit oil on canvas, *Spring into Summer*. Redolent with waving green grass, a bright blue sky and trees heavy with leaves, it's a painting that invites the viewer inside to rest awhile and listen to the soft sounds of a summer day.

Printed on archival photographic paper, *Found It*, is the compelling work of **Sondra Weiner**. The dark shape of a body seemingly falling against a background of high rise buildings is paired with a quaint and lavishly decorated white frame which provides a strange whimsy along with the disturbing content.

We all know the four nattily dressed men in **Nate Ladson's** work, *Corner Store*. This black and grey canvas reproduction will undoubtedly evoke memories in the hearts of many viewers. It certainly did in this one. Growing up in a small upstate town, I can still see my Dad chatting with his pals on a street corner while Mom and I went for an ice cream soda down the block. Ladson has so beautifully captured the camaraderie of the men in this special moment in time that one wants to step into the picture and "chew the fat" with them!

*Blue Bowl of Oranges*, an oil on canvas by **Monica Serres**, is a vivid example of the art of the still life and the art of the juxtaposition of color. In this case, Serres gives us the luscious color of the oranges against various shades of blue. The effect is vibrant and vastly appealing.

**Amy Rosenfeld's** dramatic photograph of the moon bursting through a very dark night sky would be engaging on its own. But Rosenfeld gives the viewer more by paying allegiance to this ever-mysterious visitor with her sensitive poem, *Moon*, which accompanies the photograph.

Two canvas prints by **Dimuthu N. Ranasinghe**, *Palace of Chinese Empress of Ming Dynasty* and *Summer Palace in China*, are supreme examples of the love of nature so celebrated by the Eastern culture. A serenity imbues these elegant structures of another time and is sensitively captured in Ranasinghe's work.

A woman in the midst of somewhat anonymous figures gazes shyly out at the viewer in **Michelle Ordynans'** haunting large oil on canvas, *Somali Woman*. The muted palette lends an air of mystery -where is the woman going, who are her companions? Her enigmatic expression tells us very little but she's clearly someone we want to know more about.

*Fleeing the Storm*, a mixed media work on paper by **Deborah Yaffe**, dramatically presents three birds in flight over a turbulent sea as they escape a threatening sky of grays and blues to a new green sky, soft and welcoming. Yaffe's second work is a watercolor on paper, *Cabin*. Seemingly isolated but very grounded in a lovely field, the cabin somehow projects a deep sense of peace and security.

**Margo Mead** undoubtedly has her own story regarding *Time Lost* but some paintings elicit a variety of interpretations by the individual viewer and surely, this is one of them. This acrylic on canvas features a baby hurtling through a colorful cosmos on a trajectory to??? The baby, arms and legs flailing, mouth open, eyes closed could be fearful of what lies ahead on Earth or could be eager to land and begin life's journey. A fascinating puzzlement.

An acrylic and paper, *The Mesh*, is a provocative example of how an abstract painting can draw the viewer in with its structure and thoughtful color combinations. **Richard G. Carlson** gives us a soft palette of grays, tans and muted whites. Then Carlson injects the painting with a startling burst of red and white stripes to create a small central focal point.

**Gail Comes'** *Ego te protegam (I will protect you)*, is an enigmatic oil on canvas, a larger-than-life portrait of a warrior or perhaps a god. Using a palette of greys, blacks and white on a grey background, this dramatic painting is further enhanced by the artist's strong gift for line and shading. The mystery of the warrior god is reflected in his slight smile and the strange mini painting of a face in his right ear - wow!

(Continued on Next Page)



Dimuthu N. Ranasinghe



Michelle Ordynans



Deborah Yaffe



Margo Mead



Richard G. Carlson



Gail Comes

## Salon Show 2013

(Continued from Page 2)

**Rosa Alfaro Carozzi** imbues her paintings with the lyrical art of calligraphic line. The large painting *Dance* is a spirited acrylic in various tones of yellow, beige and greys intersected by a strong black line swiveling across the background. *Nature Framed*, an interesting presentation of four small acrylics in one frame also employs the use of well-placed black lines to complete the artist's story.

A most unusual piece by **Nancy Johnson**, *A Story 2013*, is equally at home today on the walls of the WSAC and certainly in another time and place. Because of its religious theme and the method Johnson has used to execute the work (egg tempera with gold leaf on five wood panels - Icon Painting Method), this piece would strike a familiar chord to anyone visiting the great churches throughout Europe.

*The Dancers* vibrates with kinetic energy and great verve. **Arthur Cajigas'** photographic

montage is a dramatic example of a monochromatic palette which, when handled with skill, can produce a powerful work of art. The dancers, in variations of grey and black, are superimposed one on top of the other to produce this virtuoso piece.

**Silvia Soares Boyer** employs acrylic paint and silver pen on canvas in her spirited work, *A Silver Melody for Pandora*. The brilliant blue applied horizontally across the canvas brings a richness and focus to the work. And Boyer's use of a soft orange to complement the blue further enhances the image of a woman's face, her downward eyes lending an air of mystery. A musical passage across the bottom of the canvas intensifies this piquant puzzle.

If you need relief from summer's heat or winter's chill, step into *Autumn Fantasy*, a mixed media work by **Marie Robison**. This special time of the year is brought to vivid life by Robison with a zest for the colors of fall

and the freedom of juxtaposing collage and paint. At first glance, the host of butterflies invading this primeval scene almost appear to be leaves gently floating through the autumn foliage. The effect is a lovely "time out".

A vivid blue gown is the star of **Alexis Weiner's** vertical acrylic on wood, *Asymmetry in Blue*. Weiner leaves the wearer of this luscious attire to the viewer's imagination. Who was this elegant woman, where did she wear the gown, who was she with, did she have a wonderful evening? What is art if not provocative? *Asymmetry in Blue* asks so many questions, leaving the viewer to supply the answers.

Every show presented by the WSAC at the 96th Street Mall Gallery seems to raise the creative bar higher and higher. Imagine the new season - fasten your seatbelts!



Rosa Alfaro Carozzi



Nancy Johnson



Arthur Cajigas



Silvia Soares Boyer



Marie Robison



Alexis Weiner

## Dual Show: Ex Superrealismus ad Mystica (Continued from Page 1)

This is the second time the WSAC has offered our members the opportunity to feature their art in a Solo or Dual exhibit. Daniel C. Boyer's and Silvia Soares Boyer's styles of painting contrast dramatically, as the title of the show indicates. Daniel's paintings are Surrealist and Silvia's are Mystical paintings.

Daniel C. Boyer's paintings, in the tradition of Surrealism, combine text with images drawn from the subconscious, dreams, and other layers below rational thinking. Some of the paintings are done in pen (various kinds of pens) and ink and others are in acrylic. Some paintings are more representational than others, such as "The Ice Hockey Player Glides Through the Pattern of Kine" which is accompanied by hockey images or "Lennon Arrives at Grand Central Station" in which parts of a guitar and a stylized Statue of Liberty can be seen. Most of them, though, drop below our rational mind into dream-like arrangements of forms that intersect with lines running freely like automatic writing through and around the forms; these lines hit the viewer's eye as stream-of-consciousness talk would be heard. The painting "The Rheumatic Assassins Are Pursued into Nothingness by the Doddering Snail the Rhinoceros and the Moist Kin of the Interlopers' Keen" is an example, and yet, looking closely there seems to be a door into which forms, one looking human, are being hurled, and recognizable images can also be discerned in other paintings.

The paintings in acrylic are also subconscious images below thought and they create strong feelings in the viewer. The colors are laid on individually, not blended, so, for example, in an oblong form blue, red, and yellow sit on top of each other with each one distinct. Daniel uses a wide variety of media, so that one painting is done in

gouache diluted with Coca-Cola®, and in another the mat is decorated with correction tape.

Silvia Soares Boyer shows Mystical paintings of psychic energy. Symbols such as the pentagram connect the spirit to the living world. Black canvases illuminate tightly geometric shapes connected with radiating lines, and most of the paintings include crystals to heighten the energy. A pentagram, a symbol of power or faith or mathematical perfection, is a five-pointed star drawn with five straight strokes. "The Secret Path to Illumination" perhaps is a key to the meaning of the paintings, as three pentagrams descend from the world where illumination waits, with a candelabra holding three (another mystical number) candles in front of them, and the pentagram in the center leads the way to the light of illumination. "On the Science of Pentagrams" shows the four tangible sites of the world, with the pentagram connecting them, which sends out power in all directions. "On the Science of Pentagrams II" seems to my eye to show the self-perpetuating power of the pentagram. The myth of Pandora is one of Silvia's constant themes, and in "The Mythical World of Pandora Goddess", "A Melody for Pandora", and "The Mythic World of Pandora", we see her not as the giver of evil gifts as Pandora's Box is usually described, but as she was depicted in early myths as the giver of gifts, the "all-giving", a giver of good things that possibly come from a place below, within the earth. Again, a source of positive energy for the world.

Both of these fascinating groups of paintings have a lot to tell us or, rather, instruct us in the power of the unseen and the gift of giving.

## MEMBER NEWS

**Margo Mead** is exhibiting at Berkeley College Gallery, 255 Duffield St., Brooklyn, October 1, 2013 - January 2, 2014, Reception: Saturday, October 5, 1 - 3 pm.

**Raul Manzano** is curating the art exhibition "FIESTA AMERICANA" at the Livingston Gallery, Empire State College. Reception, Thursday, Oct. 10, 5:30-7:30 pm. 177 Livingston Street, 6th Fl, Brooklyn.

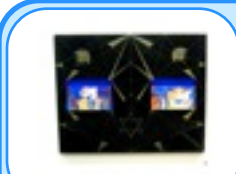
**Raul's** oil painting *Blind Justice* was selected for the cover of the scholarly journal *PENUMBRA* which debuts in October at Union Institute and University, Cincinnati, Ohio. His work can be viewed at [www.raul-manzano.com](http://www.raul-manzano.com).

**Daniel C. Boyer** had work in "Boxed In" in Wayne, NJ September 29 and has work in the Collective International Art Expo at the Centra Estatal de las Artes in Tecate, Baja California, Mexico, August 23 - November 23; and "Hurricane" at PPG, in Houma, LA September 14 - October 12. He sold work in "6x6x2013" at Rochester Contemporary Art Center in Rochester, NY.

**Silvia Soares Boyer's** work will be exhibited in "A Book About Death", from October 18 - November 24, 2013 at Tweed River Art Gallery, Murwillumbah, Australia.

**Daniel & Silvia** had work in "Adieu September" at SPACEWOMB Contemporary Art Gallery in Long Island City September 14-27. They have work in "Literary Allusions" at the Art Association of Harrisburg in PA, September 6 - October 10.

**Janice Wood Wetzel** has published a photobook, *Spectacular Barcelona*, with My Publishers.



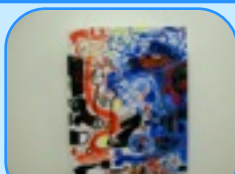
Silvia Soares Boyer



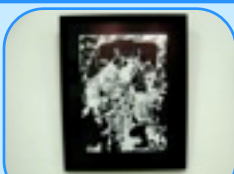
Silvia Soares Boyer



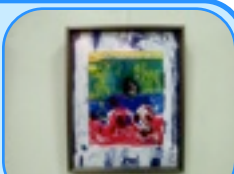
Silvia Soares Boyer



Daniel C. Boyer



Daniel C. Boyer



Daniel C. Boyer

## 2013-2014 EXHIBIT SCHEDULE

(F) = Fine Arts  
(P) = Photography  
(M) = Craft / MultiMedia

September 11 - 22, 2013 (F)  
**Dual Show: Ex Superrealismus ad Mystica**  
*Daniel C. Boyer & Silvia Soares Boyer*

September 25 - October 20, 2013 (F / P / M)  
**MultiMedia MashUp**  
*Anne Rudder*

October 21 - 28, 2013  
**Broadway Mall Community Center Show**

October 30 - November 17, 2013 (P)  
**Open 2013**  
*Robyn Gecht*

### ARTISTS:

Arthur Cajigas	Len Speier
Celia Cruzado	Thom Taylor
Robyn Gecht	Sondra Weiner
Paul Margolis	Deena Weintraub
Jean Prytyskacz	et al.
Carolyn Reus	

November 20 - December 8, 2013 (F)  
**Free Expression 2013**  
*Sonia Barnett*

December 11 - 29, 2013 (F)  
**A Gift of Art 2013**  
*Linda Lessner*

January 1 - 19, 2014 (F)  
**New Year, New Art 2014**  
*Margo Mead*

January 22 - February 9, 2014 (P)  
**Potluck**  
*Carolyn Reus*

February 12 - March 2, 2014 (F)  
**Black Renaissance 2014**  
*Sonia Barnett*

March 5 - 23, 2014 (P)  
**TBA**  
*TBA*

March 26 - April 13, 2014 (F)  
**TBA**  
*Daniel & Silvia Boyer*

April 16 - May 4, 2014 (P)  
**TBA**  
*TBA*

May 7 - 18, 2014  
**Solo Show**  
*TBA*

May 2014  
**Broadway Mall Community Center Show**

June - July 2014  
**Salon Show 2014**  
*Margo Mead*

## EXHIBIT OPPORTUNITIES

November 20 - December 8, 2013  
**Free Expression 2013**  
A Fine Arts Exhibit  
Hanging: November 17, 6:45 pm  
Reception: November 23, 2:30 - 5:30 pm  
Removal: December 8, 6 pm  
*Curator:*  
Sonia Barnett  
301 Cathedral Pkwy, #8  
New York, NY 10026  
917.257.5874  
Email: [renisseb1@msn.com](mailto:renisseb1@msn.com)

December 11 - 29, 2013  
**A Gift of Art 2013**  
A Fine Arts Exhibit  
Hanging: December 8, 6:45 pm  
Reception: December 14, 2:30 - 5:30 pm  
Removal: December 29, 6 pm  
*Curator:*  
Linda Lessner  
210 W. 101 St., #8K  
New York, NY 10025  
212.666.8135  
Email: [herb101@verizon.net](mailto:herb101@verizon.net)

January 1 - 19, 2014  
**New Year, New Art 2014**  
A Fine Arts Exhibit  
Hanging: December 29, 6:45 pm  
Reception: January 4, 2:30 - 5:30 pm  
Removal: January 19, 6 pm  
*Curator:*  
Margo Mead  
41 West 96 St., # 13C  
New York, NY 10025  
212.663.1355  
Email: [meadart@gmail.com](mailto:meadart@gmail.com)

January 22 - February 9, 2014  
**Potluck**  
A Photography Exhibit- All Styles and Types  
Deadline: December 15, 2013  
Hanging: January 19, 2014, 6:45 am  
Reception: January 25, 2014, 2:30 - 5:30 pm  
Removal- February 9, 2014, 6 pm  
*Curator:*  
Carolyn Reus  
1569 Lexington Avenue, #20  
New York, NY 10029  
646-775-1660  
Email: [reusny@hotmail.com](mailto:reusny@hotmail.com)

To participate in these shows, please submit the emailed Exhibit Entry form and a \$60 check to the appropriate Curator, whose contact information is listed above.

**Please note the new hanging time (6:45pm) for ALL shows.**

### SOLO SHOW OPPORTUNITY

For information about a possible two week solo or dual exhibition of your work at the Broadway Mall Gallery, please contact  
Anne Rudder:  
[anne.rudder@gmail.com](mailto:anne.rudder@gmail.com).

### POETRY CORNER

The Riverside Poets have NEW weekly workshops on Saturdays at **NYPL Riverside Branch**, at 127 Amsterdam Avenue (between 65th & 66th Streets) from 3-5 pm. The first Saturday of each month there will be open mike readings. For more information, you can call 212-870-1810.

The poetry workshops at the **NYPL Muhlenberg Branch** will also continue. To RSVP or for more information, please contact us at [riversidepoets@live.com](mailto:riversidepoets@live.com).

### Muhlenberg Workshops (5-7pm):

Tuesday, October 1  
Tuesday, October 8  
Thursday, October 17  
Thursday, October 24  
Tuesday, October 29

### Riverside Reading & Workshops:

Saturday, October 5 (3-5pm)  
Saturday, October 12\*  
Saturday, October 19\*  
Saturday, October 26\*

\*Please contact the Riverside Branch to confirm.

### FRIENDS OF THE WSAC



These "Friends of the WSAC" extend discounts to WSAC members. We hope you will patronize these gracious merchants.

West Side Arts Coalition gives a big shout out to **Fairway** (left) for its continued support of our Artists' Receptions.

<b>Artique Framing</b>	2580 Broadway
<b>Bob's Frame Shop</b>	2713 Broadway
<b>Gelabert Studios</b>	255 W 86th St
<b>Global Copy</b>	2578 Broadway
<b>Ivy League Stationers</b>	2955 Broadway
<b>Ivy League Stationers</b>	1201 Amsterdam
<b>Lee's Art Shop</b>	220 W 57th St
<b>Metro Grand Hardware</b>	2554 Broadway
<b>Sam Flax</b>	3 W 20th St
<b>Stationery &amp; Toy</b>	125 W 72nd St
<b>Quad Right</b>	147 W 95th St